

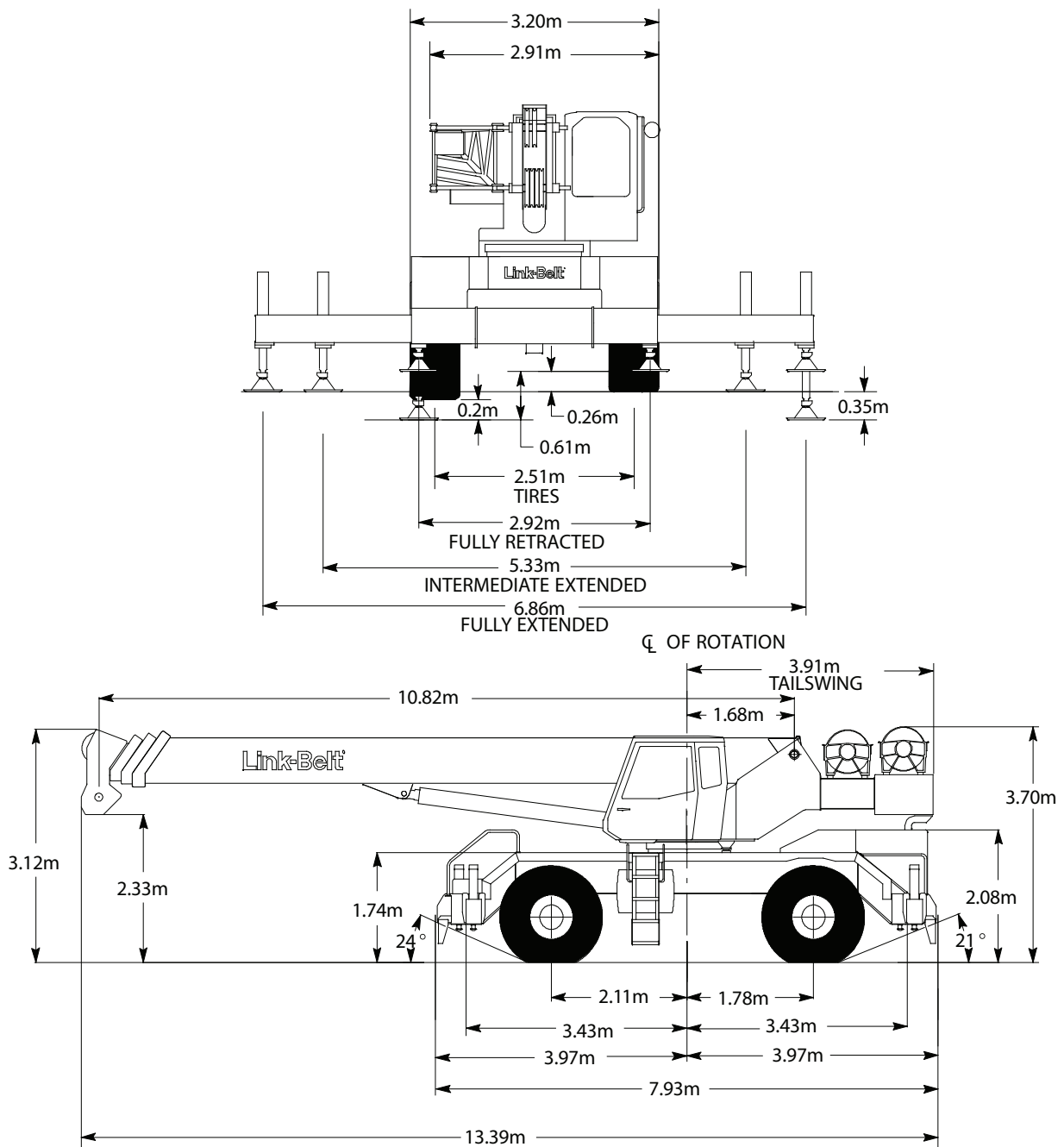
# LINKBELT

## RTC-8050 Series II 50T Rough Terrain





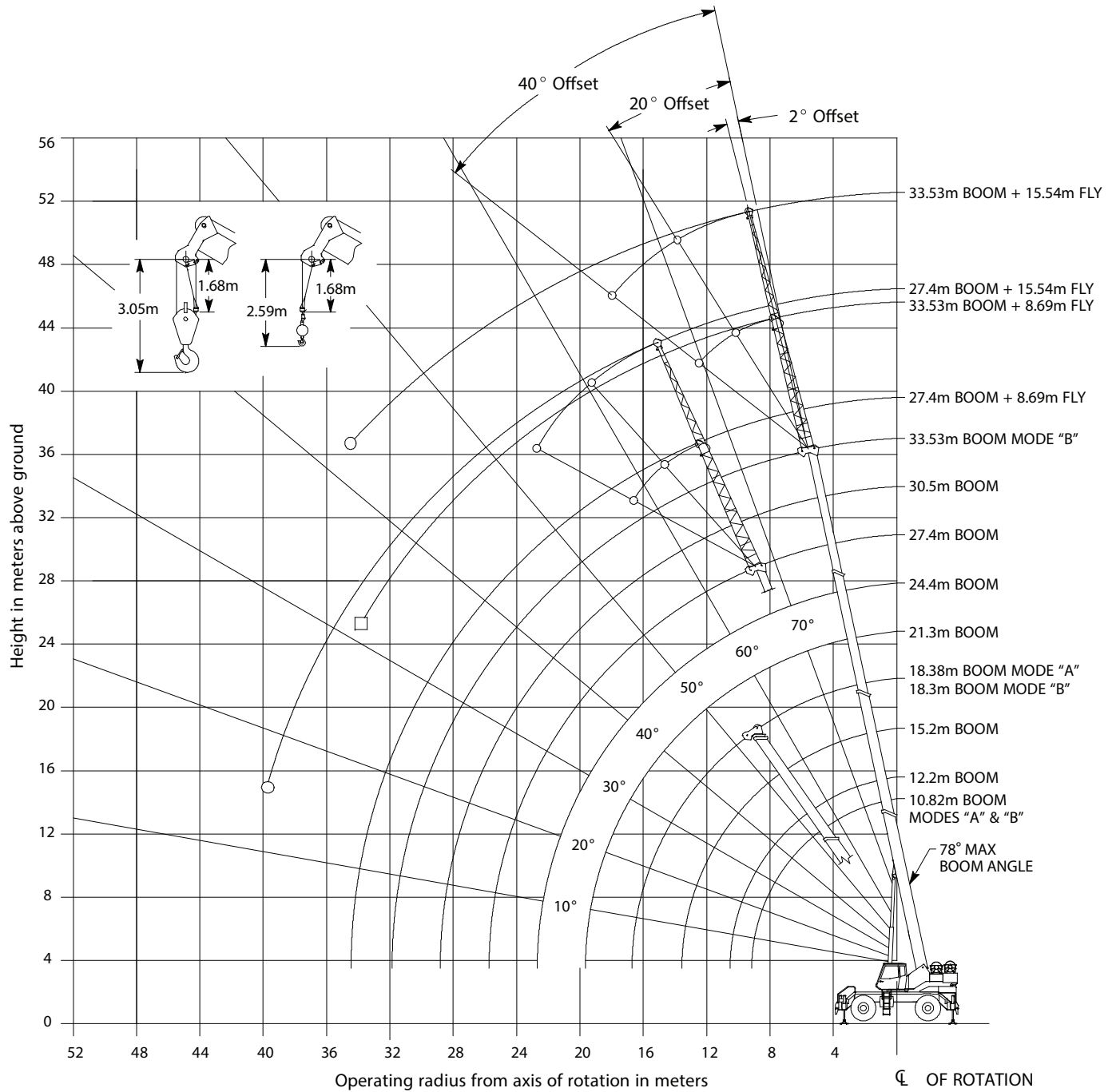
## DIMENSIONS



All Dimensions Are Based Upon 23.5 R25 2-Star Rating Tires

(NOT TO SCALE)

### WORKING RANGE

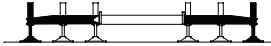
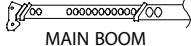


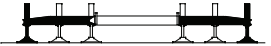
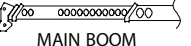
- Denotes Main Boom + 15.54m Offset Fly-Boom Mode "B"
- Denotes Main Boom + 8.69m Offset Fly-Boom Mode "B"

Note: Boom and fly geometry shown are for unloaded condition and crane standing level on firm supporting surface. Boom deflection, subsequent radius, and boom angle change must be accounted for when applying load to hook.



## RATED LIFTING CAPACITY

Rated Lifting Capacities In Kilograms Fully Extended Outriggers See Set Up Note 2		 FULL			 MAIN BOOM "A"		
Load Radius (m)	10.82m			12.2m			Load Radius (m)
	$\angle$ °	360°	Over Front	$\angle$ °	360°	Over Front	
2.5	71.0	50 000	50 000				2.5
3	68.0	45 350	45 350	71.0	35 550	35 550	3
3.5	65.5	34 550	35 200	68.5	34 050	34 050	3.5
4	62.0	31 550	32 150	65.5	31 350	31 350	4
4.5	59.0	29 000	29 550	63.0	28 900	29 150	4.5
5	56.0	26 750	27 300	60.5	26 700	27 200	5
6	48.5	23 100	23 600	54.5	23 050	23 500	6
7	40.5	19 650	20 550	48.0	19 600	20 450	7
8	30.5	16 650	17 450	41.0	16 600	17 400	8
9	13.5	13 000	13 000	32.5	14 100	14 900	9
10				20.5	11 450	12 100	10
Min.Bm. Ang./Cap.	0 (9.1)	8 050	8 050	0 (10.5)	6 950	6 950	Min.Bm. Ang./Cap.


Rated Lifting Capacities In Kilograms Fully Extended Outriggers See Set Up Note 2		 FULL			 MAIN BOOM "A"		
Load Radius (m)	15.2m			18.38m			Load Radius (m)
	$\angle$ °	360°	Over Front	$\angle$ °	360°	Over Front	
3	75.5	33 250	33 250				3
3.5	73.5	30 550	30 550				3.5
4	71.5	28 350	28 350	75.5	23 050	23 050	4
4.5	69.5	26 350	26 350	73.5	21 450	21 450	4.5
5	67.5	24 650	24 650	72.0	20 200	20 200	5
6	63.0	21 850	21 850	68.5	17 950	17 950	6
7	58.5	19 450	19 500	65.0	16 100	16 100	7
8	54.0	16 450	17 250	61.5	14 500	14 500	8
9	48.5	13 900	14 700	58.0	13 200	13 200	9
10	43.0	11 300	12 000	54.0	11 150	11 800	10
12	29.5	7 900	8 400	45.0	7 800	8 300	12
14				34.5	5 700	6 100	14
16				19.0	4 250	4 600	16
Min.Bm. Ang./Cap.	0 (13.6)	4 550	4 550	0 (16.7)	2 950	2 950	Min.Bm. Ang./Cap.

$\angle$  ° Loaded Boom Angle In Degrees.

( ) Reference Radius For Minimum Boom Angle Capacities (Shown in Parenthesis) Are In Meters.

### RATED LIFTING CAPACITY

Rated Lifting Capacities In Kilograms  
Fully Extended Outriggers  
See Set Up Note 2



Load Radius (m)	10.82m			12.2m			15.2m			Load Radius (m)
	$\angle$ °	360°	Over Front	$\angle$ °	360°	Over Front	$\angle$ °	360°	Over Front	
2.5	71.0	50 000	50 000							2.5
3	68.0	45 350	45 350	70.5	17 150	17 150	75.0	17 150	17 150	3
3.5	65.5	34 550	35 200	68.5	17 150	17 150	73.0	17 150	17 150	3.5
4	62.0	31 550	32 150	65.5	17 150	17 150	71.0	17 150	17 150	4
4.5	59.0	29 000	29 550	63.0	17 150	17 150	69.0	17 150	17 150	4.5
5	56.0	26 750	27 300	60.5	17 150	17 150	67.0	17 150	17 150	5
6	48.5	23 100	23 600	54.5	17 150	17 150	63.0	17 150	17 150	6
7	40.5	19 650	20 550	48.0	17 150	17 150	58.5	17 150	17 150	7
8	30.5	16 650	17 450	41.0	16 850	17 150	53.5	17 100	17 150	8
9	13.5	13 000	13 000	32.5	14 400	15 200	48.5	14 700	15 500	9
10				20.5	11 700	12 400	43.0	12 050	12 700	10
12							29.0	8 550	9 100	12
Min.Bm Ang./Cap.	0 (9.1)	8 050	8 050	0 (10.5)	6 650	6 650	0 (13.6)	4 500	4 500	Min.Bm Ang./Cap.

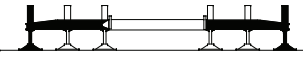
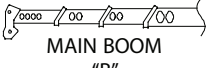
Load Radius (m)	18.3m			21.3m			24.4m			Load Radius (m)
	$\angle$ °	360°	Over Front	$\angle$ °	360°	Over Front	$\angle$ °	360°	Over Front	
4	74.5	17 150	17 150	77.0	17 150	17 150				4
4.5	73.0	17 150	17 150	76.5	17 150	17 150				4.5
5	71.5	17 150	17 150	75.0	17 150	17 150	77.0	16 050	16 050	5
6	68.0	17 150	17 150	72.0	17 150	17 150	75.0	15 700	15 700	6
7	64.5	17 150	17 150	69.0	17 150	17 150	72.5	15 700	15 700	7
8	61.0	17 150	17 150	66.0	16 600	16 600	70.0	15 050	15 050	8
9	57.0	14 800	15 600	63.0	14 900	15 050	67.5	13 850	13 850	9
10	53.0	12 150	12 850	60.0	12 200	12 900	65.0	12 250	12 950	10
12	44.5	8 700	9 250	53.0	8 800	9 350	59.0	8 850	9 400	12
14	33.5	6 550	7 000	45.5	6 650	7 100	53.0	6 700	7 100	14
16	17.5	5 050	5 450	36.5	5 200	5 550	46.5	5 250	5 600	16
18				25.5	4 100	4 400	39.0	4 200	4 500	18
20							30.0	3 350	3 650	20
22							16.5	2 700	2 950	22
Min.Bm. Ang./Cap.	0 (16.6)	3 150	3 150	0 (19.7)	2 250	2 250	0 (22.7)	1 600	1 600	Min.Bm. Ang./Cap.

$\angle$  ° Loaded Boom Angle In Degrees.

( ) Reference Radius For Minimum Boom Angle Capacities (Shown In Parenthesis) Are In Meters.



## RATED LIFTING CAPACITY

Rated Lifting Capacities In Kilograms Fully Extended Outriggers See Set Up Note 2										
 										
Load Radius (m)	27.4m			30.5m			33.53m			Load Radius (m)
	$\angle$ °	360°	Over Front	$\angle$ °	360°	Over Front	$\angle$ °	360°	Over Front	
6	77.0	13 100	13 100							6
7	75.0	13 100	13 100	77.0	10 850	10 850				7
8	73.0	12 400	12 400	75.5	10 850	10 850	77.0	8 800	8 800	8
9	70.5	11 400	11 400	73.5	10 300	10 300	75.5	8 800	8 800	9
10	68.5	10 500	10 500	71.5	9 500	9 500	74.0	8 750	8 750	10
12	63.5	8 900	9 050	67.5	8 200	8 200	70.0	7 550	7 550	12
14	58.5	6 750	7 150	63.0	6 750	7 100	66.5	6 500	6 500	14
16	53.0	5 300	5 650	58.0	5 350	5 700	62.5	5 350	5 700	16
18	47.5	4 250	4 550	53.5	4 250	4 550	58.0	4 300	4 600	18
20	41.0	3 400	3 700	48.0	3 450	3 700	53.5	3 450	3 750	20
22	33.5	2 750	3 000	42.5	2 800	3 050	48.5	2 850	3 100	22
24	23.5	2 250	2 450	36.0	2 300	2 500	43.5	2 350	2 550	24
26				28.0	1 850	2 050	38.0	1 900	2 100	26
28				16.0	1 500	1 700	31.0	1 550	1 700	28
30							22.5	1 250	1 400	30
Min.Bm. Ang./Cap.	0 (25.8)	1 100	1 100	0 (28.8)	700	700	0 (31.9)	400	400	Min.Bm. Ang./Cap.

$\angle$  ° Loaded Boom Angle In Degrees.

( ) Reference Radius For Minimum Boom Angle Capacities (Shown In Parenthesis) Are In Meters.