



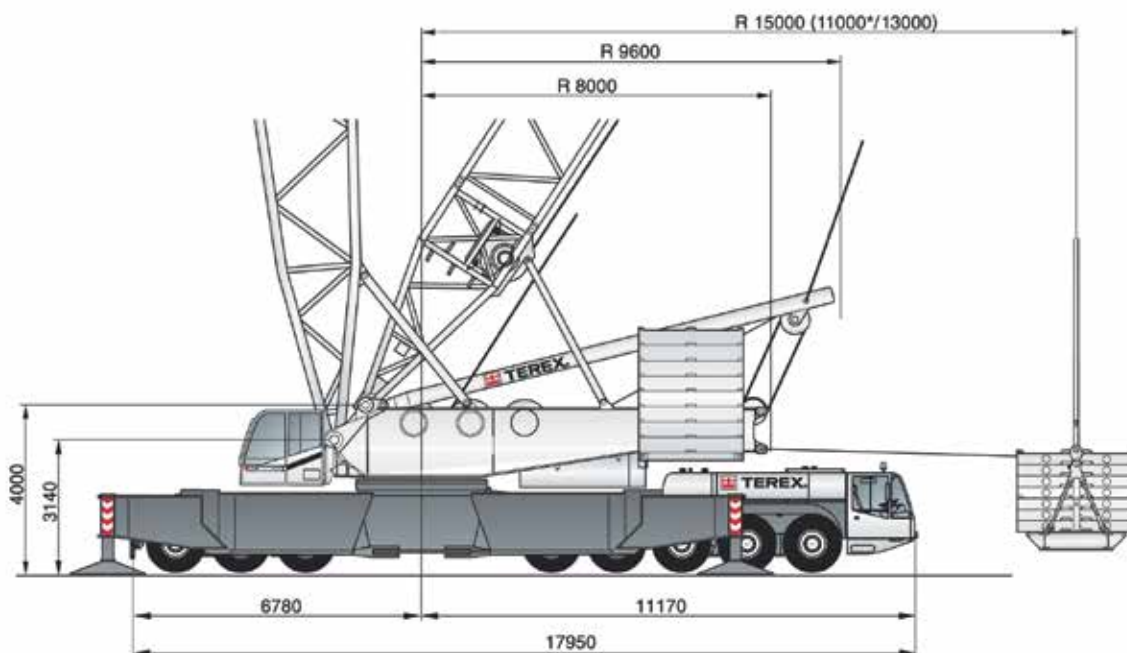
## SPECIFICATIONS

### WORKING SPEEDS (INFINITELY VARIABLE)

| Mechanisms                                      | Rope $\varnothing$ | Speeds <sup>1)</sup> | Single line pull <sup>2)</sup> | Length of hoist rope |
|---|--------------------|----------------------|--------------------------------|----------------------|
| Hoist I (H1)                                    | 28 mm              | max. 120 m / min     | 158 kN                         | 900 m                |
| Hoist II (H2)                                   | 28 mm              | max. 120 m / min     | 158 kN                         | 900 m                |
| Boom derricking (W2)                            | 28 mm              | max. 120 m / min     |                                |                      |
| Boom hoist (E)                                  | 30 mm              | max. 52 m / min      |                                |                      |
| Jib luffing (W1)                                | 28 mm              | max. 120 m / min     |                                |                      |
| Slewing (rpm)                                   |                    | 0,7                  |                                |                      |
| <sup>1)</sup> top layer                         |                    |                      |                                |                      |
| <sup>2)</sup> without reeving effect considered |                    |                      |                                |                      |

### BASIC CRANE DIMENSIONS

Basic crane dimensions with standard Superlift attachment



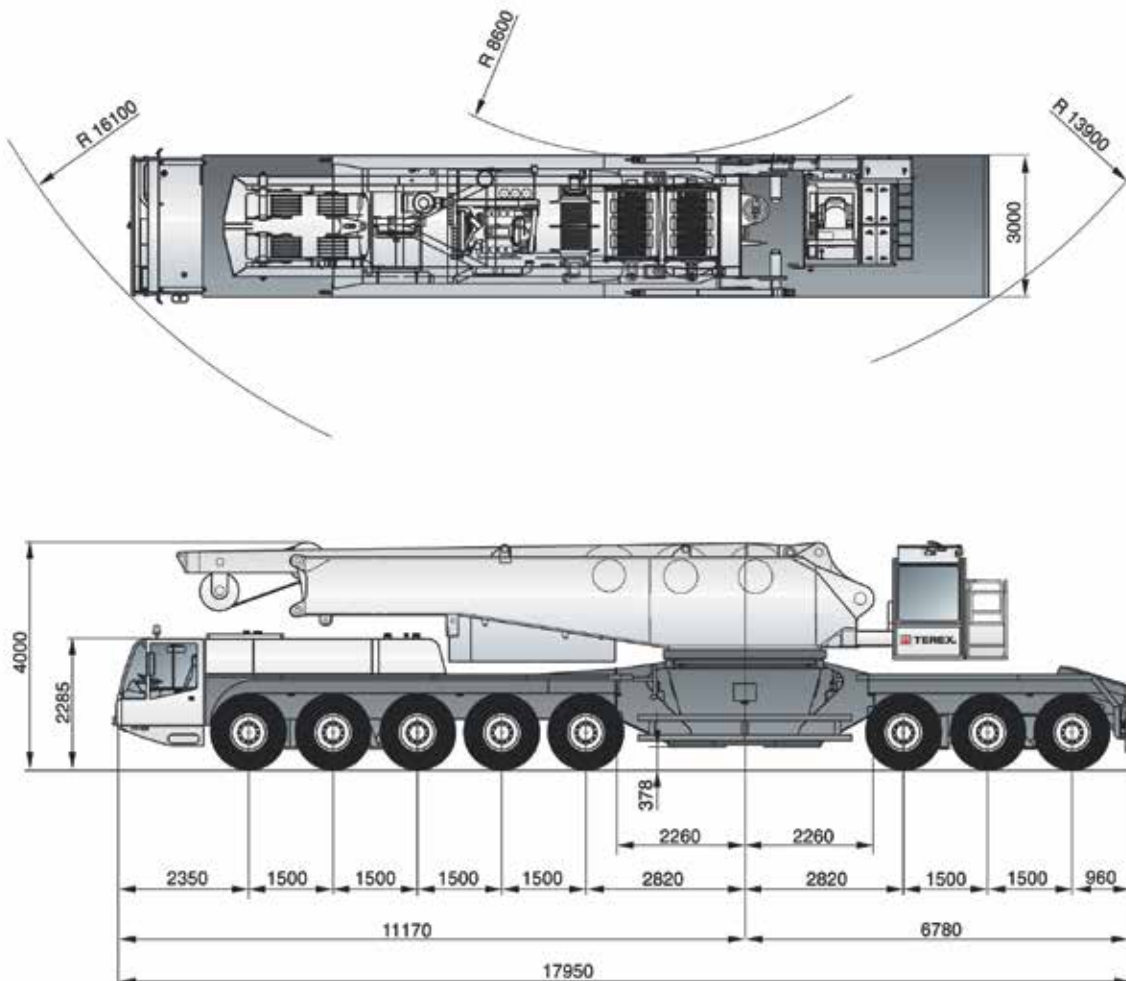
\* Working range limited due to cabin and outriggers

# 600 TONNE

## Demag TC2800-1 Truck Crane

### SPECIFICATIONS

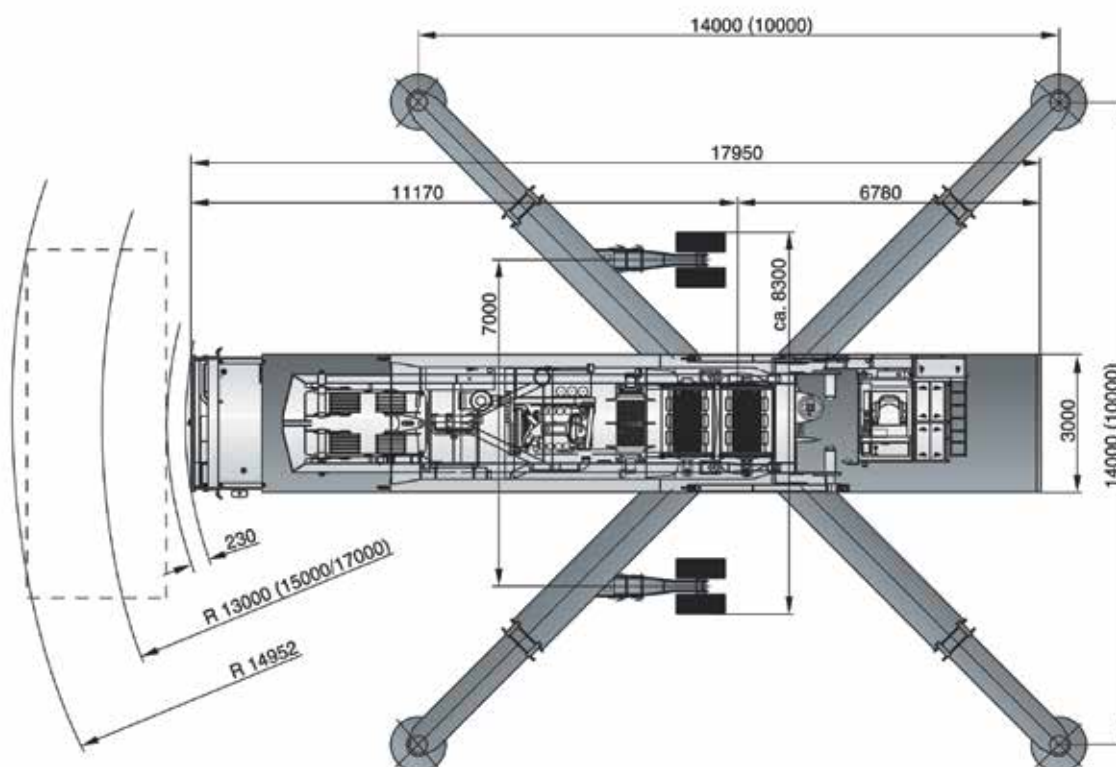
| HOOK BLOCKS |                |                   |                 |  |                  |
|-------------|----------------|-------------------|-----------------|--|------------------|
| Type        | Possible load  | Number of sheaves | Number of lines | Weight                                 | „D“              |
| 2 x 300     | 600 t<br>247 t | 2 x 11<br>11      | 2 x 22<br>17    | 10,4 t – 12,0 t<br>7,1 t – 7,9 t       | 5,00 m<br>5,40 m |
| 2 x 200     | 400 t<br>196 t | 2 x 7<br>7        | 2 x 14<br>13    | 8,2 t – 10,0 t<br>5,3 t – 6,2 t        | 5,00 m<br>5,40 m |
| 160         | 160 t          | 5                 | 11              | 3,6 t/5,1 t/6,6 t<br>3,6 t/5,1 t/6,6 t | 4,60 m<br>7,10 m |
| 110         | 110 t          | 3                 | 7               | 2,3 t – 4,1 t                          | 4,70 m           |
| 50          | 50 t           | 1                 | 3               | 2,0 t – 2,8 t                          | 4,50 m           |
| 16          | 16 t           | –                 | 1               | 0,9 t                                  | 3,00 m           |





## SPECIFICATIONS

| TRANSPORT                             |             |
|---------------------------------------|-------------|
| Tyres                                 | 14.00 R 25  |
| Travel speed                          | 0 – 75 km/h |
| Gradeability                          | 43 %        |
| Fuel tank capacity for carrier        | 970 l       |
| Fuel tank capacity for superstructure | 500 l       |



600 TONNE Demag TC2800-1

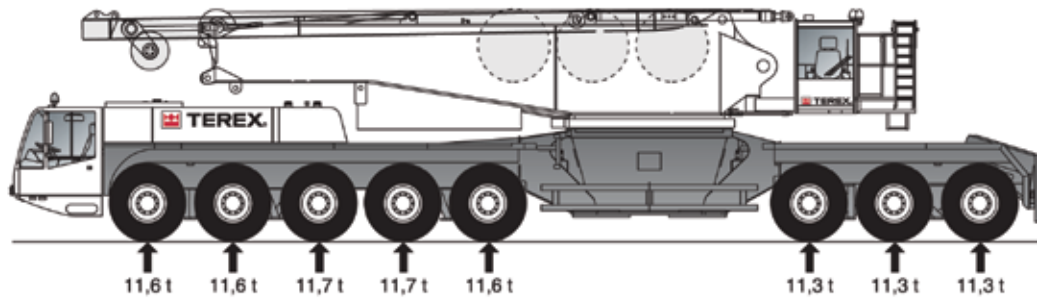
# 600 TONNE

## Demag TC2800-1 Truck Crane

### SPECIFICATIONS

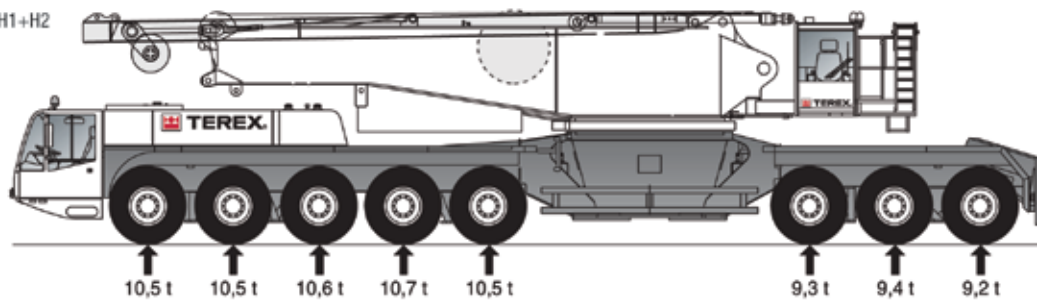
#### TRANSPORT

Total weight:  
92,0 t



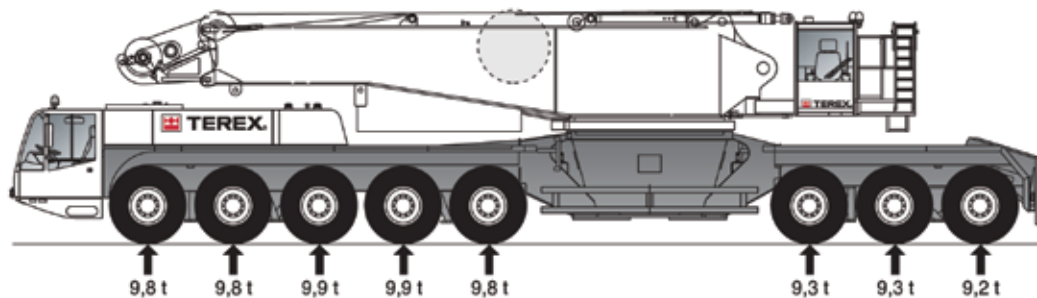
without winches H1+H2

Total weight:  
80,8 t

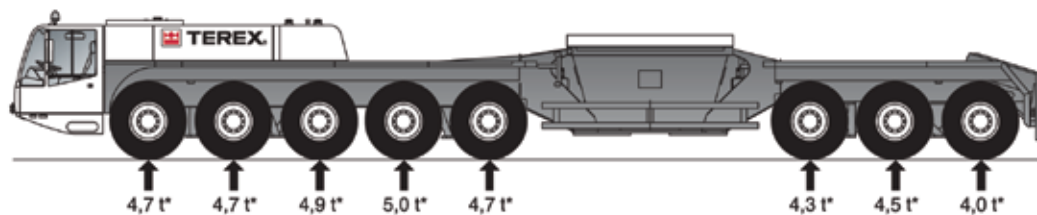


without winches H1+H2  
without A-frame

Total weight:  
77,0 t



Total weight:  
36,6 t\*



\* With quick-connection. Height with superstructure and quick connection 4.20 m.



## SPECIFICATIONS

