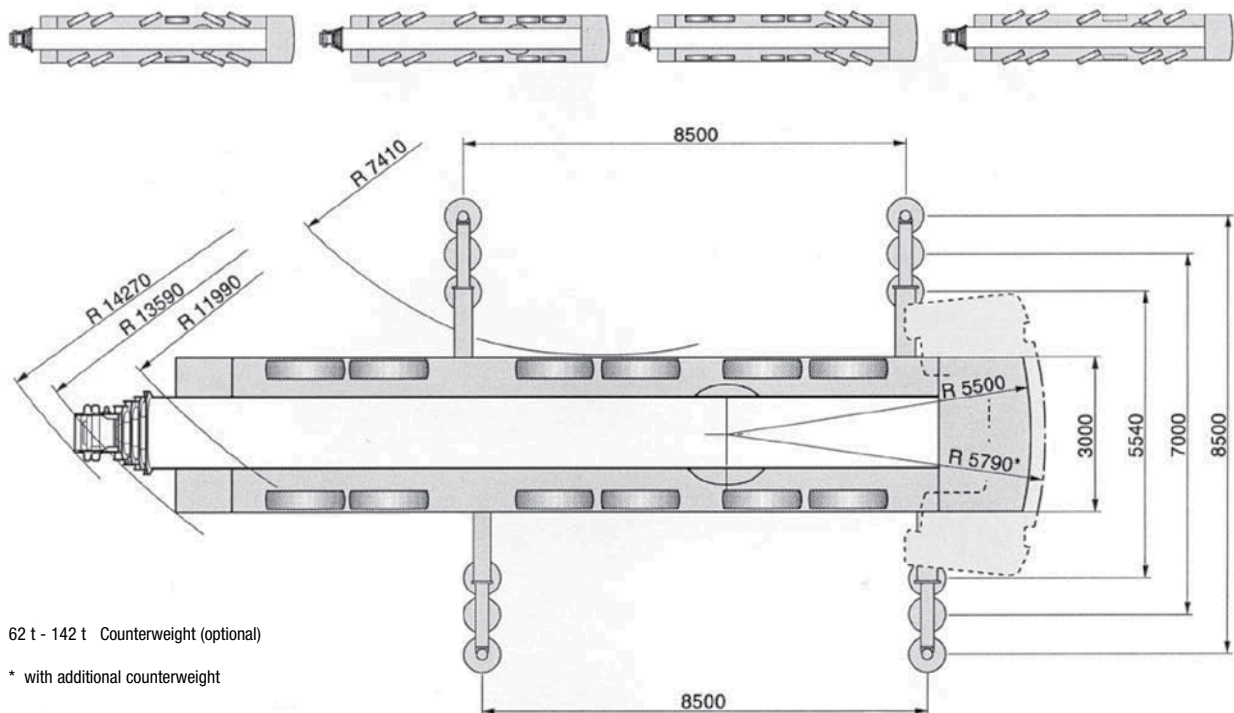
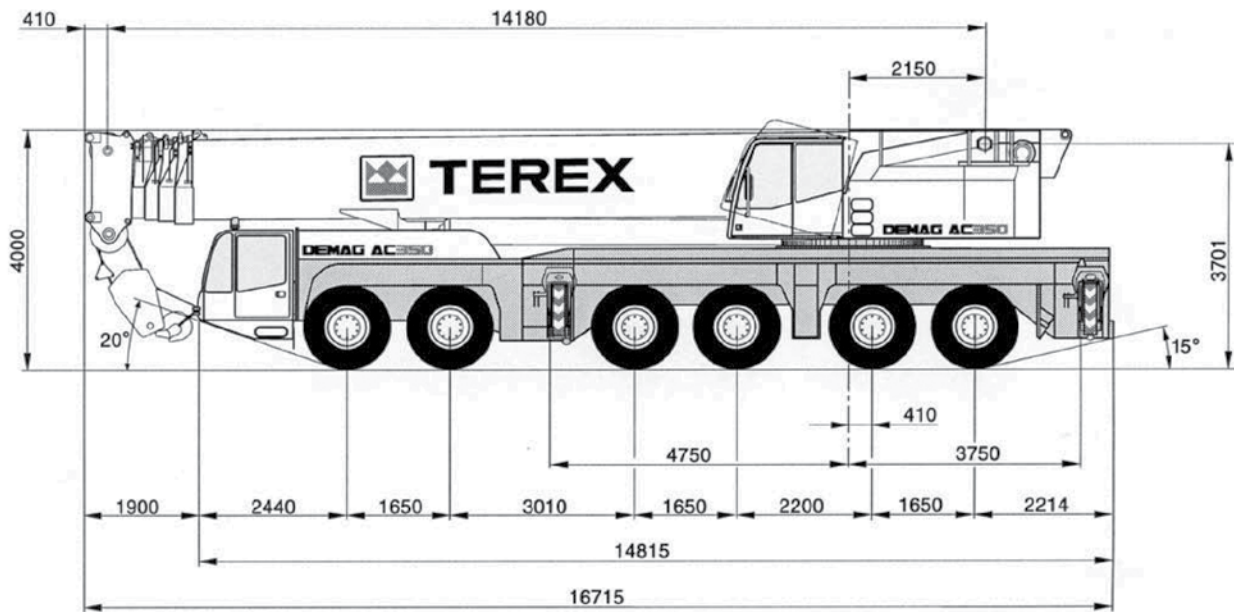




DIMENSIONS



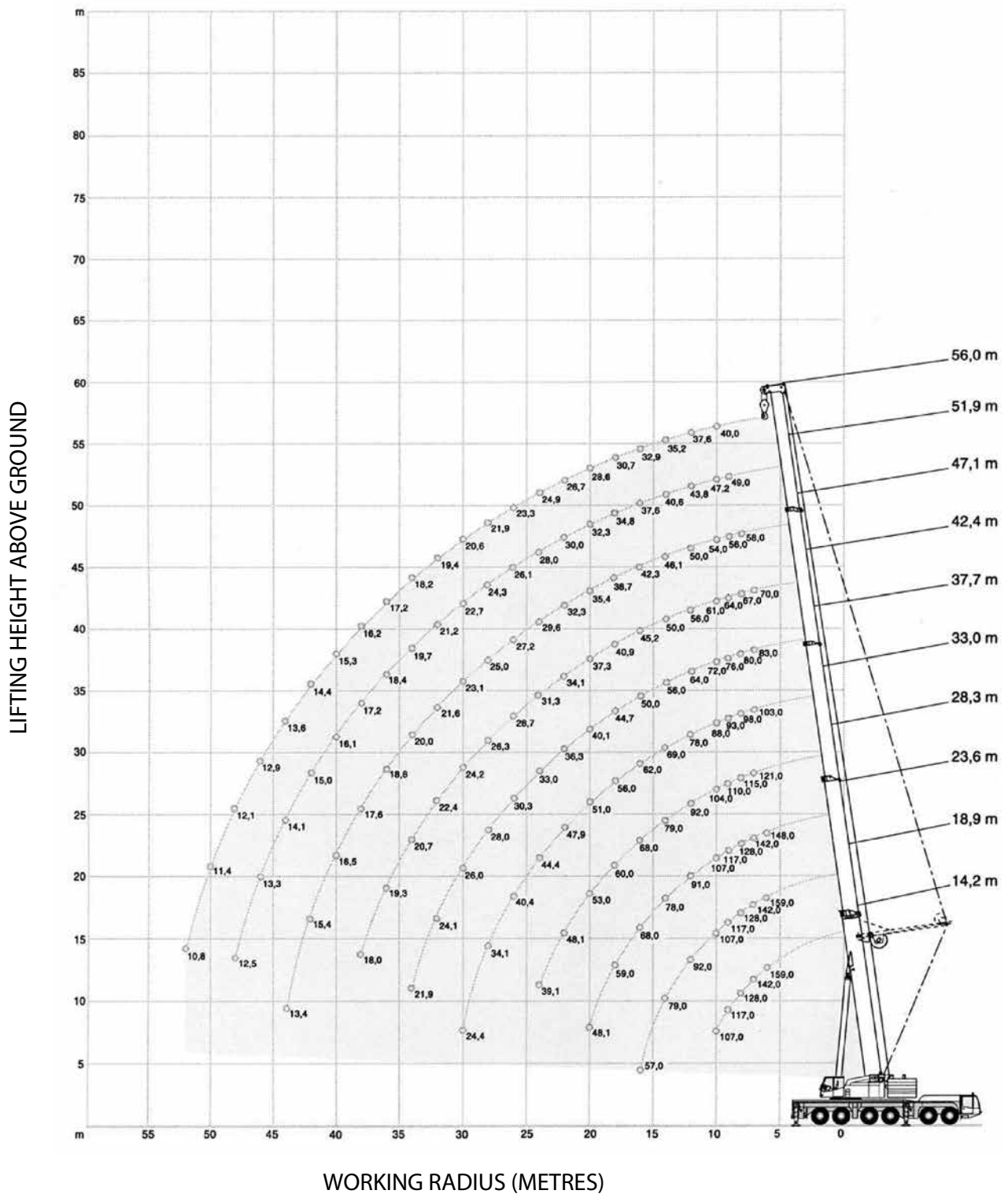
62 t - 142 t Counterweight (optional)

* with additional counterweight

350 TONNE

Demag AC350 All Terrain

WORKING RANGE





RATED LIFTED CAPACITY - HA (MAIN BOOM)


142 t		360°										DIN/ISO	
Main Boom													
Radius	m	14,2	18,9	23,6	28,3	33,0	37,7	42,4	47,1	51,9	56,0	Radius	
m	t	t	t	t	t	t	t	t	t	t	t	m	
6	159,0*	159,0*	148,0*	-	-	-	-	-	-	-	-	6	
7	142,0*	142,0*	142,0*	121,0	103,0	83,0	70,0	-	-	-	-	7	
8	128,0	128,0	128,0	115,0	98,0	80,0	67,0	58,0	-	-	-	8	
9	117,0	117,0	117,0	110,0	93,0	76,0	64,0	56,0	49,0	-	-	9	
10	107,0	107,0	107,0	104,0	88,0	72,0	61,0	54,0	47,2	40,0	-	10	
12	-	92,0	91,0	92,0	78,0	64,0	56,0	50,0	43,8	37,6	-	12	
14	-	79,0	78,0	79,0	69,0	56,0	50,0	46,1	40,6	35,2	-	14	
16	-	57,0	68,0	68,0	62,0	50,0	45,2	42,3	37,6	32,9	-	16	
18	-	-	59,0	60,0	56,0	44,7	40,9	38,7	34,8	30,7	-	18	
20	-	-	48,1	53,0	51,0	40,1	37,3	35,4	32,3	28,6	-	20	
22	-	-	-	48,1	47,9	36,3	34,1	32,3	30,0	26,7	-	22	
24	-	-	-	39,1	44,4	33,0	31,3	29,6	28,0	24,9	-	24	
26	-	-	-	-	40,4	30,3	28,7	27,2	26,1	23,3	-	26	
28	-	-	-	-	34,1	28,0	26,3	25,0	24,3	21,9	-	28	
30	-	-	-	-	24,4	26,0	24,2	23,1	22,7	20,6	-	30	
32	-	-	-	-	-	24,1	22,4	21,6	21,2	19,4	-	32	
34	-	-	-	-	-	21,9	20,7	20,0	19,7	18,2	-	34	
36	-	-	-	-	-	-	19,3	18,8	18,4	17,2	-	36	
38	-	-	-	-	-	-	18,0	17,6	17,2	16,2	-	38	
40	-	-	-	-	-	-	-	16,5	16,1	15,3	-	40	
42	-	-	-	-	-	-	-	15,4	15,0	14,4	-	42	
44	-	-	-	-	-	-	-	13,4	14,1	13,6	-	44	
46	-	-	-	-	-	-	-	-	13,3	12,9	-	46	
48	-	-	-	-	-	-	-	-	12,5	12,1	-	48	
50	-	-	-	-	-	-	-	-	-	11,4	-	50	
52	-	-	-	-	-	-	-	-	-	10,8	-	52	
54	-	-	-	-	-	-	-	-	-	-	-	54	

122 t		360°											DIN/ISO	
Main Boom														
Radius	m	14,2 ¹⁾	14,2	18,9	23,6	28,3	33,0	37,7	42,4	47,1	51,9	56,0	Radius	
m	t	t	t	t	t	t	t	t	t	t	t	t	m	
3	350,0*	237,0*	175,0*	160,0*	-	-	-	-	-	-	-	-	3	
3,5	237,0*	220,0*	174,0*	159,0*	-	-	-	-	-	-	-	-	3,5	
4	222,0*	204,0*	172,0*	158,0*	130,0	-	-	-	-	-	-	-	4	
4,5	210,0*	190,0*	170,0*	156,0*	130,0	-	-	-	-	-	-	-	4,5	
5	198,0*	177,0*	167,0*	154,0*	129,0	109,0	-	-	-	-	-	-	5	
6	175,0*	157,0*	156,0*	148,0*	125,0	106,0	86,0	-	-	-	-	-	6	
7	153,0*	140,0*	139,0*	140,0*	121,0	103,0	83,0	70,0	-	-	-	-	7	
8	134,0*	126,0	126,0	126,0	115,0	98,0	80,0	67,0	58,0	-	-	-	8	
9	119,0	115,0	115,0	115,0	110,0	93,0	76,0	64,0	56,0	49,0	-	-	9	
10	107,0	105,0	105,0	105,0	104,0	88,0	72,0	61,0	54,0	47,2	40,0	-	10	
12	-	-	88,0	88,0	88,0	78,0	64,0	56,0	50,0	43,8	37,6	-	12	
14	-	-	75,0	74,0	75,0	69,0	56,0	50,0	46,1	40,6	35,2	-	14	
16	-	-	57,0	64,0	65,0	62,0	50,0	45,2	42,3	37,6	32,9	-	16	
18	-	-	-	56,0	57,0	56,0	44,7	40,9	38,7	34,8	30,7	-	18	
20	-	-	-	48,1	50,0	51,0	40,1	37,3	35,4	32,3	28,6	-	20	
22	-	-	-	-	43,6	44,7	36,3	34,1	32,3	30,0	26,7	-	22	
24	-	-	-	-	38,5	39,5	33,0	31,3	29,6	28,0	24,9	-	24	
26	-	-	-	-	-	35,2	30,3	28,7	27,2	26,1	23,3	-	26	
28	-	-	-	-	-	31,7	28,0	26,3	25,0	24,3	21,9	-	28	
30	-	-	-	-	-	24,4	26,0	24,2	23,1	22,7	20,6	-	30	
32	-	-	-	-	-	-	24,1	22,4	21,6	21,2	19,4	-	32	
34	-	-	-	-	-	-	21,9	20,7	20,0	19,7	18,2	-	34	
36	-	-	-	-	-	-	-	19,3	18,8	18,4	17,2	-	36	
38	-	-	-	-	-	-	-	18,0	17,6	17,2	16,2	-	38	
40	-	-	-	-	-	-	-	-	16,5	16,1	15,3	-	40	
42	-	-	-	-	-	-	-	-	15,4	15,0	14,4	-	42	
44	-	-	-	-	-	-	-	-	13,4	14,1	13,6	-	44	
46	-	-	-	-	-	-	-	-	-	13,3	12,9	-	46	
48	-	-	-	-	-	-	-	-	-	12,5	12,1	-	48	
50	-	-	-	-	-	-	-	-	-	-	11,4	-	50	
52	-	-	-	-	-	-	-	-	-	-	10,8	-	52	

350 TONNE

Demag AC350 All Terrain

RATED LIFTED CAPACITY - HA (MAIN BOOM)

82 t		 360°										DIN/ISO
	m	14,2	18,9	23,6	28,3	33,0	37,7	42,4	47,1	51,9	56,0	
m	t	t	t	t	t	t	t	t	t	t	t	m
3	231,0*	175,0*	160,0*	-	-	-	-	-	-	-	-	3
3,5	213,0*	174,0*	159,0*	-	-	-	-	-	-	-	-	3,5
4	197,0*	172,0*	158,0*	130,0	-	-	-	-	-	-	-	4
4,5	184,0*	170,0*	156,0*	130,0	-	-	-	-	-	-	-	4,5
5	171,0*	167,0*	154,0*	129,0	109,0	-	-	-	-	-	-	5
6	151,0*	151,0*	148,0*	125,0	106,0	86,0	-	-	-	-	-	6
7	135,0*	134,0*	135,0*	121,0	103,0	83,0	70,0	-	-	-	-	7
8	121,0	121,0	120,0	115,0	98,0	80,0	67,0	58,0	-	-	-	8
9	107,0	107,0	106,0	107,0	93,0	76,0	64,0	56,0	49,0	-	-	9
10	96,0	96,0	95,0	96,0	88,0	72,0	61,0	54,0	47,2	40,0	-	10
12	-	78,0	78,0	78,0	78,0	64,0	56,0	50,0	43,8	37,6	-	12
14	-	61,0	62,0	61,0	62,0	56,0	50,0	46,1	40,6	35,2	-	14
16	-	49,8	50,0	51,0	50,0	50,0	45,2	42,3	37,6	32,9	-	16
18	-	-	42,4	43,6	42,5	41,8	40,9	38,7	34,8	30,7	-	18
20	-	-	36,2	37,3	36,3	35,6	35,6	35,4	32,3	28,6	-	20
22	-	-	-	32,4	31,4	31,2	30,7	31,1	30,0	26,7	-	22
24	-	-	-	28,6	28,6	28,0	26,8	27,2	27,9	24,9	-	24
26	-	-	-	-	26,1	24,7	23,6	24,0	24,6	23,3	-	26
28	-	-	-	-	23,4	22,1	21,0	21,3	21,9	21,9	-	28
30	-	-	-	-	21,2	19,8	19,8	19,6	19,6	19,7	-	30
32	-	-	-	-	-	18,3	18,5	18,3	17,7	17,8	-	32
34	-	-	-	-	-	16,8	16,8	16,6	16,0	16,1	-	34
36	-	-	-	-	-	-	15,4	15,1	14,5	14,6	-	36
38	-	-	-	-	-	-	14,2	13,8	13,2	13,3	-	38
40	-	-	-	-	-	-	-	12,7	12,0	12,0	-	40
42	-	-	-	-	-	-	-	11,6	10,9	10,9	-	42
44	-	-	-	-	-	-	-	10,6	9,9	9,9	-	44
46	-	-	-	-	-	-	-	-	9,0	9,0	-	46
48	-	-	-	-	-	-	-	-	8,2	8,2	-	48
50	-	-	-	-	-	-	-	-	-	7,5	-	50
52	-	-	-	-	-	-	-	-	-	6,8	-	52

Remarks

* With special attachment

1) Over rear



RATED LIFTED CAPACITY - HASSL (SIDEWAYS SUPER LIFT)

142 t		360°						DIN/ISO	
Radius	m	33,0	37,7	42,4	47,1	51,9	56,0	Radius	m
m	t	t	t	t	t	t	t	m	t
5	117,0	95,0	-	-	-	-	-	5	117,0
6	113,0	92,0	80,0	-	-	-	-	6	113,0
7	109,0	90,0	78,0	66,0	-	-	-	7	109,0
8	105,0	87,0	76,0	64,0	58,0*	53,0*	-	8	105,0
9	102,0	84,0	74,0	62,0	56,0*	51,0*	-	9	102,0
10	98,0	81,0	72,0	60,0	54,0*	49,2*	-	10	98,0
12	87,0	76,0	68,0	57,0	50,0*	45,4*	-	12	87,0
14	76,0	71,0	64,0	54,0	47,5	42,3*	-	14	76,0
16	65,0	65,0	60,0	51,0	45,5	39,6*	-	16	65,0
18	57,0	58,0	56,0	48,1	43,6	37,2*	-	18	57,0
20	50,0	51,0	52,0	45,5	41,7	35,2	-	20	50,0
22	45,1	45,9	46,5	43,2	40,0	33,7	-	22	45,1
24	40,4	41,2	41,8	41,0	38,2	32,3	-	24	40,4
26	34,7	37,3	37,8	38,6	36,4	30,9	-	26	34,7
28	28,2	33,7	34,4	35,3	34,2	29,4	-	28	28,2
30	18,8	29,3	31,4	32,3	32,2	28,1	-	30	18,8
34	-	17,9	25,0	26,8	27,5	25,7	-	34	-
38	-	-	16,4	22,2	23,2	23,3	-	38	-
42	-	-	-	15,3	19,2	19,9	-	42	-
46	-	-	-	-	13,9	16,5	-	46	-
50	-	-	-	-	-	11,8	-	50	-

122 t		360°						DIN/ISO	
Main Boom									
Radius	m	33,0	37,7	42,4	47,1	51,9	56,0	Radius	m
m	t	t	t	t	t	t	t	m	t
5	117,0	95,0	-	-	-	-	-	5	117,0
6	113,0	92,0	80,0	-	-	-	-	6	113,0
7	109,0	90,0	78,0	66,0	-	-	-	7	109,0
8	105,0	87,0	76,0	64,0	58,0*	53,0*	-	8	105,0
9	102,0	84,0	74,0	62,0	56,0*	51,0*	-	9	102,0
10	98,0	81,0	72,0	60,0	54,0*	49,2*	-	10	98,0
12	86,0	76,0	68,0	57,0	50,0*	45,4*	-	12	86,0
14	72,0	71,0	64,0	54,0	47,5	42,3*	-	14	72,0
16	62,0	63,0	60,0	51,0	45,5	39,6*	-	16	62,0
18	54,0	55,0	55,0	48,1	43,6	37,2*	-	18	54,0
20	47,7	48,5	49,1	45,5	41,7	35,2	-	20	47,7
22	41,2	42,3	43,0	43,2	40,0	33,7	-	22	41,2
24	36,0	36,9	37,7	38,7	38,2	32,3	-	24	36,0
26	31,7	32,6	33,3	34,3	35,1	30,9	-	26	31,7
28	28,1	29,0	29,7	30,6	31,4	29,4	-	28	28,1
30	18,8	25,9	26,6	27,5	28,3	28,1	-	30	18,8
34	-	17,9	21,7	22,5	23,2	23,4	-	34	-
38	-	-	16,4	18,8	19,4	19,6	-	38	-
42	-	-	-	15,3	16,4	16,6	-	42	-
46	-	-	-	-	13,9	14,0	-	46	-
50	-	-	-	-	-	11,8	-	50	-

Remarks

* SSL 30°

350 TONNE

Demag AC350 All Terrain

WORKING RANGE - LUFFING FLY JIB

