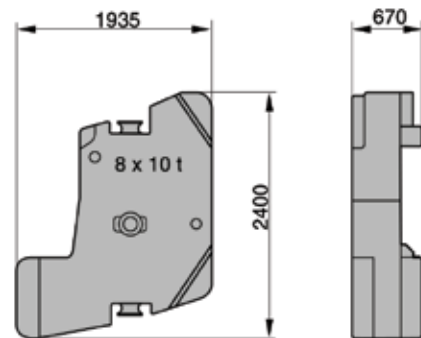
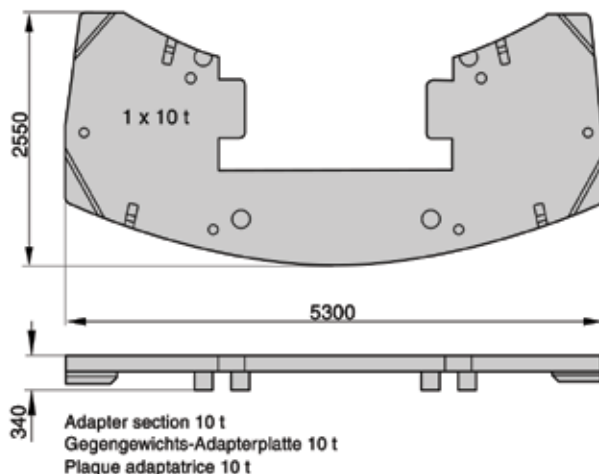
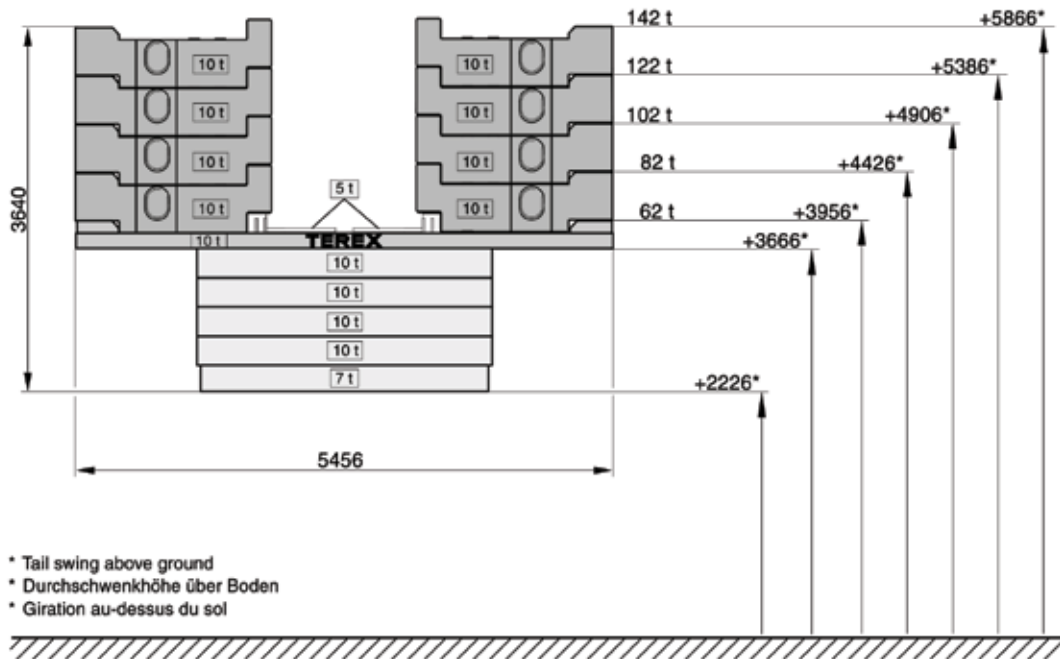
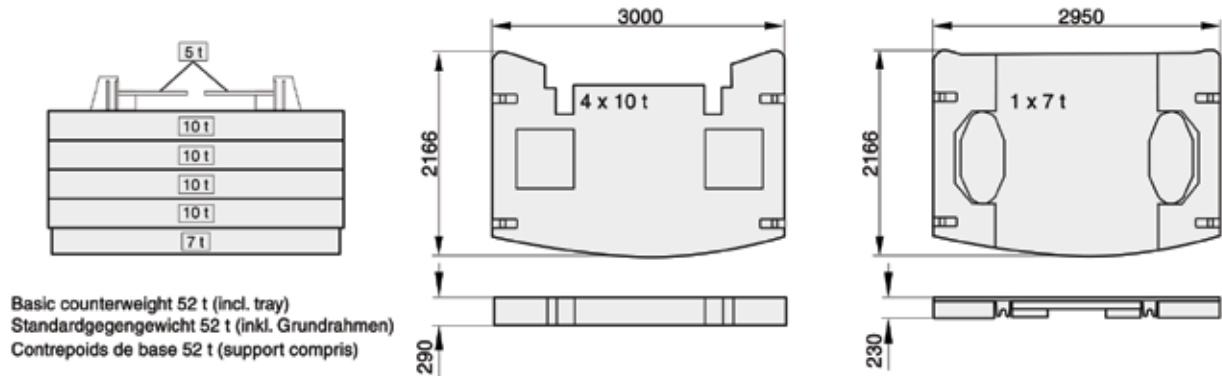


# 350 TONNE

## Demag AC350 All Terrain

### SPECIFICATIONS





# 350 TONNE

## Demag AC350 All Terrain

### SPECIFICATIONS

#### AXLE LOADS

Crane in travel order · Kran in Transportstellung · Grue en position de marche	6 x 12 000 kg
Axles · Achsen · Essieux	
Total weight · Gesamtgewicht · Poids total	72 000 kg

#### WORKING SPEEDS (INFINITELY VARIABLE)

Mechanisms	Normal speed	High speed	Max. permissible line pull	Rope diameter / Rope length
Hoist I	60 m/min	145 m/min	115 kN	23 mm / 375 m
Hoist II	60 m/min	155 m/min	115 kN	23 mm / 566 m
Slewing				max. 1,1 <sup>1</sup> /min
Telescoping speed				14,2 – 56,0 m: 420 s
Boom elevation				–1,6° – +82°: 85 s

#### CARRIER PERFORMANCE

Travel speed	0 . . 85 km/h
Gradeability	41 %
Ground clearance	409 mm

#### HOOK BLOCK / HEAVY-LIFT ATTACHMENT

Type	Possible load	Number of sheaves	Weight	„D“	Number of lines	Heavy-lift attachment
250	244,3 t	11	2000 kg	3,00 m	23	6 add'l sheaves
200	200,0 t	9	2000 kg	3,00 m	19	6 add'l sheaves
160	160,0 t	7	1700 kg	3,00 m	15	2 add'l sheaves
125	123,9 t	5	1200 kg	3,00 m	11	
80	80,0 t	3	1050 kg	3,00 m	7	
40	35,2 t	1	750 kg	2,70 m	3	
12,5	11,8 t	Single line hook	500 kg	2,00 m	1	